

DEDICATED TO THE PROMOTION OF TOWNS COUNTY

OPINIONS & COMMENTARY

Letters to The Editor

Dear Editor:
We were very disturbed to read the full page ad printed in the Towns County Herald of January 22, 2014 titled Alert: Are Trial Lawyers Trying to Buy Republican Politicians?

Among the statements printed was this: "Trial Lawyers supported Obamacare which is bad for seniors, bad for business and bad for jobs." We are seniors and do not see that it is bad for us.

We consider this ad to be a smear campaign against both Representative Stephen Allison (Republican) and President Obama (Democrat).

Sincerely,
Lewis and Melda Davis

From the Desk of:



Sheriff Clinton of Towns County

rest of their fortune.

Typically, when one responds they will receive further instructions complete with official looking documents. Sometimes they are invited, or encouraged to travel to a foreign country to complete the transaction. There are documented cases of scammers having large amounts of counterfeit money to complete the hoax.

Here's the catch: these emails are from thieves who would steal your money. They will come up with any number of emergencies that will delay transfer, but once they have your money, it and the thieves will vanish. There are reports of people who responded to these scams being threatened, beaten, and even murdered.

So what should you do? Remember that con-artists are very good at manipulating people. They often use tactics that play on your emotions, but they are thieves and nothing more. If you receive an email from someone in a foreign country asking you to send money, simply delete it. Their sad story is concocted and they are only trying to steal your money.

If you are concerned, not sure what to do, contact our Sheriff's Office at 706-896-4444, or via internet at www.townssheriff.com. We will be more than happy to assist you in any way we can. As your sheriff, it is both my duty and my desire to help keep you and your property safe from all criminals.

Email scams

Odds are, if you have an address you've received an email from someone trying to scam you. This is such a frequent occurrence that it is often the theme for late night comedy or stand up routines, yet people still get taken advantage of. Often, these scams referred to as "Nigerian Email Scams" are designed to tug on one's heart strings. There will be a sob story as well as an opportunity to help this person and make a lot of money doing so.

These emails generally contain a plea for help from someone claiming to be former government leaders, business people, spouses of former officials, etc., whose money is tied up in a foreign country. Frequently, Nigeria was used in the story lines, thus the name "Nigerian Email Scam."

The themes vary, but generally there will be an offer to transfer a large sum of money to the recipient's bank account in exchange for the recipient paying taxes or fees so that the sender can access the

Agencies partner for farm equipment road safety message

The Chestatee/Chattahoochee RC&D Council is constantly working on ways to help make our citizens lives better, safer, more prosperous, and to improve our standard of living. One way we try to accomplish this is to remind our citizens of safety hazards and things that can suddenly change the course of their lives in ways that we don't usually think of.

There is nothing more startling than to come around one of these mountain curves while gazing out at the beautiful scenery and there dead ahead is a tractor with a bale of hay on each end going 15 miles per hour. Sometimes there are flashing lights on it to warn drivers, but many times there is nothing but the back end of a hay bale. This sudden slow down to 15 MPH irritates many drivers and they will take any chance they get to drive around the slow moving farm machine even if there are cars coming from the other direction. I guess the rule of no passing when cars are coming doesn't apply to passing a tractor, but the consequences could and many times are fatal.

While this traffic situation happens more often in other parts of Georgia, it still happens up here and the results are the same, not good for anybody. I sometimes drive my tractor for short distances on the highway when it is not practical to load it up on the trailer as do many of my neighbors when they are feeding cows down the road from the barn. I try to pull over as soon as I can to let cars by, but it is not always possible and the driver behind many times gets furious because they have to be delayed for 5 minutes to their important destination. We all have to remember that the feed, fertilizer, seed, or crops that the farmer is hauling today will turn into the food on our table tomorrow so we all need to work together to help keep them farming. The number of crashes on Georgia roads involving farm equipment rose 7 percent in 2012. When harvest season approaches, the state's highway safety and agriculture agencies team up to bring attention to the need for more safety on Georgia's rural roads.

While motorists cruise the beautiful rural roadways of Georgia this year, they should be aware of slow-moving farm equipment using those roads during harvest season. The Department of Agriculture and the Governor's Office of Highway Safety have worked for the last two years to get this message out to drive safely around slow-moving vehicles, but it's clear there is still more work to do. Statistics from 2012 show that nine deaths resulted from 429 farm-equipment related crashes and 185 people reported injuries. As our farmers are working to bring in the year's crop, Georgians are reminded of farmers' increased presence on the roadways. While travel-

GUEST COLUMNS

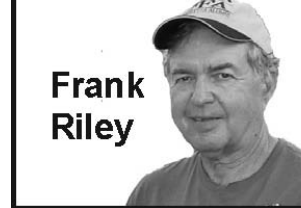
From time to time, people in the community have a grand slant on an issue that would make a great guest editorial. Those who feel they have an issue of great importance should call our editor and talk with him about the idea. Others have a strong opinion after reading one of the many columns that appear throughout the paper. If so, please write. Please remember that publication of submitted editorials is not guaranteed.

LETTERS TO THE EDITOR SHOULD BE EMAILED OR MAILED TO:

Towns County Herald, Letter to the Editor, PO Box 365, Hiawassee, GA 30546. Our email address: tcherald@windstream.net. Letters should be limited to 200 words or less, signed, dated and include a phone number for verification purposes. This paper reserves the right to edit letters to conform with Editorial page policy or refuse to print letters deemed pointless, potentially defamatory or in poor taste. Letters should address issues of general interest, such as politics, the community, environment, school issues, etc.

Letters opposing the views of previous comments are welcomed; however, letters cannot be directed at, nor name or ridicule previous writers. Letters that recognize good deeds of others will be considered for publication. *Note: All letters must be signed, and contain the first and last name and phone number for verification.

Executive Director of RC&D

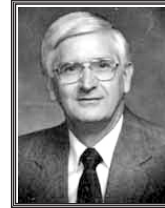


Frank Riley

ing, you are urged to be mindful of tractors and other farm equipment sharing the same roadway and to take extra precaution. When sharing the road with other motorists, farmers should have red reflective triangles posted on their equipment to signal to drivers they are operating a slow-moving vehicle. The triangle should be visible and if it is rusted or faded, it should be replaced. The Departments want our farmers to have a happy harvest and for motorists to get home safely.

By law, farm equipment must have the nationally designated slow-moving vehicle sign - a red triangle-shaped reflector - to warn oncoming drivers that their equipment is on the road. These vehicles often travel at speeds no higher than 25 mph. When drivers come up on slow-moving vehicles on an open country road, many won't think twice about passing them in a hurry and motorists are reminded that these farmers have every right to use the roadway, too. Waiting a few minutes to safely pass or for the driver to pull over won't impact their drive substantially, and everybody will get home unharmed to drive another day.

For more information on farm equipment safety contact: Frank M. Riley, Jr, Executive Director - Chestatee/Chattahoochee RC&D Council. email frank.ccrdd@gmail.com.



"IT'S ON MY MIND.."
Danny H. Parris

Hit the trail

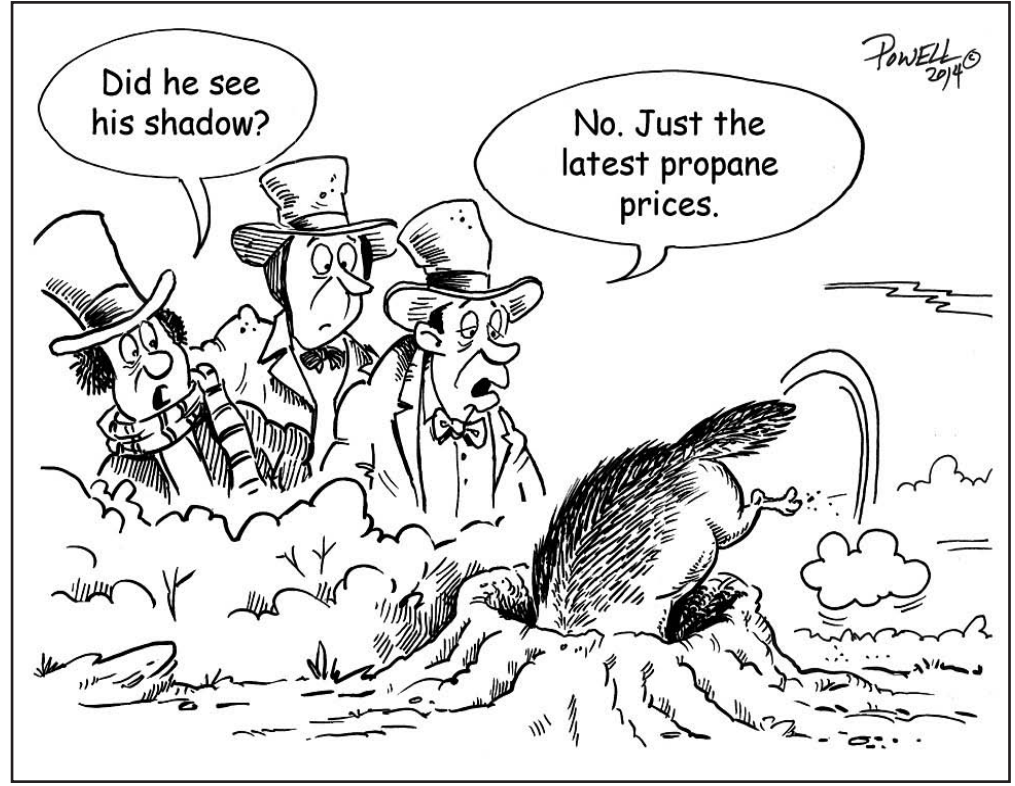
Some time ago, I was watching a program on the educational channel on TV. There were four or five individuals who were relating their experiences while walking the Appalachian Trail. Each one of them shared their personal encounters with poisonous snakes and savage animals, their struggles with climatic conditions, the times of sheer physical exhaustion and their mental challenges, especially with periods of depression. But each one of them testified that it was a life-changing experience, filled with jubilation when they began the descent on Mount Katahdin, ME. Two or three of them cried with sheer joy on the completion of the journey.

Those who begin the challenge of walking the Appalachian Trail must count the cost if they hope to finish the Trail. The Appalachian Trail begins at Springer Mountain, GA and winds its way for 2,100 miles through high mountains, deep valleys, and presents the challengers with wild animals, exposes them to unpredictable weather and those who undertake the journey must be up to a grueling physical and mental challenge if they endure to the end to Mount Katahdin, ME. Because of the sacrificial demands of this monumental journey, less than one in ten hikers actually completes the Trail. Like the Appalachian Trail the Christian life presents

the traveler with temptations, trials, troubles, doubts, fears and a mixed bag of threats and dangers. Along the path, we sometimes are greeted with heartaches, sorrows, grief, anxiety, discouragement and depression.

Again, like the Appalachian Trail, the Christian trail is abundant with breath-taking rewards. Even in the valley there are experiences that are nothing less than miraculous. What about that mountain top? The view is spectacular. God fills up the journey with sparkling sunrises and golden sunsets. All along the way the traveler views the handiwork of God in each child, mom, dad, sister, brother, grandmother, granddad; in every tree, plant, flower and all the heavens, with the moon, sun, stars and galaxies declaring the glory of God.

Unlike the Appalachian Trail, we always travel with our guide, the Lord Jesus Christ who has blazed the trail before us. He points out the pitfalls. He protects us from the evil one. He provides physical and physical sustenance for the journey. When we descend into the valley He is there. When we climb the hill He is there. There is nothing that we encounter along the way that He is not with us. The journey is always sweet and joyful because of His presence. The end of the journey is indescribable. The reward is heaven. We begin here on earth with Christ, but when the journey is complete it is heaven where a crown of righteousness awaits those who endure to the end. Our endurance is through Christ. Isn't it time you hit The Trail with the Trailblazer?



Community Calendar

American Legion Post 23 meets 1st Tuesday of each month at 4 PM at VFW Post 7807, Sunnyside Rd., Hiawassee. Call 706-896-8387 for details. We need your support!
Towns County Water Board Meeting 3rd Monday of each month at 6 p.m. in the TC Water Office Building.
Mountain Community Seniors meet the second Thursday of each month at the Senior Center in Hiawassee at 1 p.m.
Towns County Democratic Party meets the 2nd Thursday of every month at 5 PM at the Senior Center.
Towns County Republican Party meets at 6:30 PM the 4th Thursday of each month at the new Senior Center. For more info call 706-994-3919.
Towns County Planning Commission is held the 2nd Monday of each month at 7 p.m. in the Courthouse.
Towns County is held the 3rd Thursday at 5:30 p.m. in the courthouse.
School Board Meeting, 2nd Monday each month at 7 p.m. in the auditorium.
Hiawassee City Council 1st Tuesday of month 4 p.m., at City Hall.
Young Harris City Council, 1st Tuesday of month at 7 p.m., Young Harris City Hall.
The Hiawassee River Valley Kennel Club meetings are held at 7 p.m. the 1st Monday of each month at Brother's Restaurant in Murphy. Call Kit: 706-492-5253 or Peggy: 828-835-1082.
The Unicoy Masonic Lodge #259 meets on the 2nd Monday of the month at 7:30 p.m.
Stevens Lodge #414 F & AM meets the 1st Thursday of each month at 7:30 PM in Young Harris.
Towns County Board of Elections holds its monthly meetings on the 2nd Wednesday of each month at 4 p.m. at the Elections Office (Old Rock Jail).
Towns County Historical Society meets the 2nd Monday of each month at the Senior Center in Hiawassee at 5:30 p.m. Annual dues \$15, PO Box 1182, Hiawassee, GA. We do oral family histories

of residents. 706-896-1060, www.townshistory.org
Bridge Players intermediate level meets at 12:30 p.m. on Mondays & Fridays at the Towns County Rec Center.
Mountain Regional Arts and Crafts Guild, Inc (MRACG) meets the 2nd Tuesday of each month at ArtWorks Artisan Centre, Hiawassee. Refreshments at 6 p.m., meeting begins at 6:30 p.m. Call us by 706-896-0932 or mtmregarts-craftsguild.org.
Mountain Computer User Group meets the 2nd Monday of each month at the Goolsby Center at YHC. Q & A at 6 p.m., meeting at 7 p.m.
FPL Retirees Breakfast will meet the 2nd Tuesday of each month at the Hole in the Wall Restaurant on the square in Blairsville at 9 a.m.
Chattahoochee-Nantahala Chapter, Trout Unlimited meets 2nd Thursday of each month at Cadence Bank in Blairsville. 5 p.m. Fly Tying - 7 p.m. General Meeting. Everyone welcome. www.ngatu692.com.
Military Officers Association of America (MOAA) meets the 3rd Monday of each month at various area restaurants. For information call John at 706-896-2430 or visit www.moaa.org/chapter/blueridge-mountains.
Alcoholics Anonymous: 24 hour phone line 828-837-4440.
Mothers of Preschoolers meets the third Thursday of each month at First Baptist Church of Blairsville from 6 - 8 p.m. Call the church at 706-745-2469.
Chattahoochee Regional Hospital Auxiliary on the 3rd Monday of each month, except the months of July, October and December, in the hospital cafeteria at 1:30 p.m.
Mountain Magic Table Tennis Club meets 3 p.m. Thursdays at Pine Log Baptist Church Fellowship Hall in Brasstown. Ping Pong players welcome. Call Jerry (828) 837-7658.
The Humane Society Mountain Shelter Board of Directors meets the last Thursday of every month at 5:30 p.m. at Cadence Bank in Blairsville.
The Towns County Alzheimer's

Support Group meets the first Tuesday of each month at 1:30 PM in the Family Life Center of McConnell Memorial Baptist Church. For more info call Carol at 706-896-6407.
The Appalachian Shrine Club meets the 2nd Thursday of each month at 6:30 PM at the Allegheny Lodge in Blairsville. For more info call William 706-994-6177.
Georgia Mountain Writers Club meets at St. Francis of Assisi Church the 2nd Wednesday of every month at 10 AM.
GMREC Garden Tours every Monday 9 a.m.-1 p.m.
Shooting Creek Basket Weavers meets the 2nd Wednesday of every month at 10 a.m. at the Shooting Creek Fire Hall Community Center. For more info www.shootingcreek-basketweavers.com.
Friendship Community Club meets the 3rd Thursday of the month at 6 PM at Clubhouse, 1625 Hwy. 76, 706-896-3637.
Goldwing Road Riders meets the 3rd Saturday of each month at Daniel's Steakhouse in Hiawassee. We eat at 11 and meeting begins at 12.
Narcotics Anonymous (NA) meets every Wednesday evenings at 7 PM at the Red Cross building (up the hill from the chamber office on Jack Dayton Circle).
Caregiver support group meets 2nd Tuesday of each month, 3 p.m. at Brasstown Manor, located at 108 Church St., Hiawassee. Call 706-896-4285 for more info.
Enchanted Valley Square Dance Club. Dances 2nd & 4th Fridays at Towns Co. Rec. Ctr. from 7-9 PM. \$5/person to dance. Free to watch.
Brasstown Woodturners Guild meets 1st Saturday of month at 9:30 AM in HHS shop. For more info call J. C. at 706-896-5711.
VFW Post #7807 will be hosting a fish fry they 2nd & 4th Fridays of each month April - October. \$9. all you can eat from 4:30 - 8 PM.
Mountain Amateur Radio Club (MARC) meets 6:30 PM the 1st Monday of month at 1298 Jack Dayton Cir. (next to EMS), Hiawassee. For info call Al 706-896-9614 after 6 PM.

Towns County Herald

Dedicated to the promotion of Towns County

KENNETH WEST.....PUBLISHER
CHARLES DUNCAN.....EDITOR, ADVERTISING
SHAWN HENRIKSON.....COPY EDITOR
AZURE WELCH.....STAFF WRITER, PHOTOGRAPHER
MASON MITCHAM.....SPORTS WRITER
JOE COLLINS.....ADVERTISING SALES
LOWELL NICHOLSON.....NEWS, SPORTS PHOTOGRAPHER

OFFICE LOCATED AT 518 N. MAIN ST. SUITE 7
"THE MALL" HIAWASSEE (706) 896-4454
Publication Number 635540. Entered as second-class matter on November 8, 1928, at the post office at Hiawassee, Georgia under Act of March 3, 1879. With additional mailing points.
EMAIL Address: tcherald@windstream.net

POSTMASTER: Send change of address to:
TOWNS COUNTY HERALD
P.O. BOX 365 HIAWASSEE, GEORGIA 30546

DEADLINE FOR ALL NEWS COPY & ADVERTISING
Fridays at 5 PM
SUBSCRIPTION RATES
TOWNS COUNTY (1 YEAR) \$15
OUT OF COUNTY (1 YEAR) \$25
The Towns County Herald is not responsible for errors in advertising beyond the cost of the actual space involved. All subscriptions must be paid in advance.